



Compression for
those who love to
**Move
Freely**

Kimberly,
Secondary lymphedema patient

JOBST® Confidence

The Next Generation of Made-to-Measure
Flat-Knit Compression Garments



Introducing a **New Era of Comfort**

JOBST® Confidence helps your patients feel unrestricted, with a one-of-a-kind fit garment that's as unique as they are. The new generation of flat-knit technology used in JOBST® Confidence allows for a precise fit to the real anatomical body shapes. This personally refined fit not only provides comfort, but also supports your patients with a greater degree of movement.

The new **Contour Fit** technology

JOBST® Confidence has been expertly developed with a new knitting technology that, unlike traditional flat knit, allows the fit of the garment to adapt in more positions.

This supports a true personalization of garment fit. Specially designed knitting machines were created for the JOBST® Confidence line to deliver contour fit.

**INNOVATIVE
TECHNOLOGY**



Contour Fit



No Contour Fit

JOBST® Confidence is designed to:

- provide more comfort
- support easy donning
- be more skin-friendly
- deliver improved climate control
- provide better movement
- offer a range of colours and design options

JOBST® Confidence



Design options available in **Deco line** and **patient initials**



Innovative knitting method allows for high ability to **conform to individual body shapes**



Made with conforming fabric that also gives the reassurance of **firm support**



Advanced moisture management system with double-layer construction for **optimal wearing comfort**



Flexible, conforming fabric is designed to make putting on and taking off easier



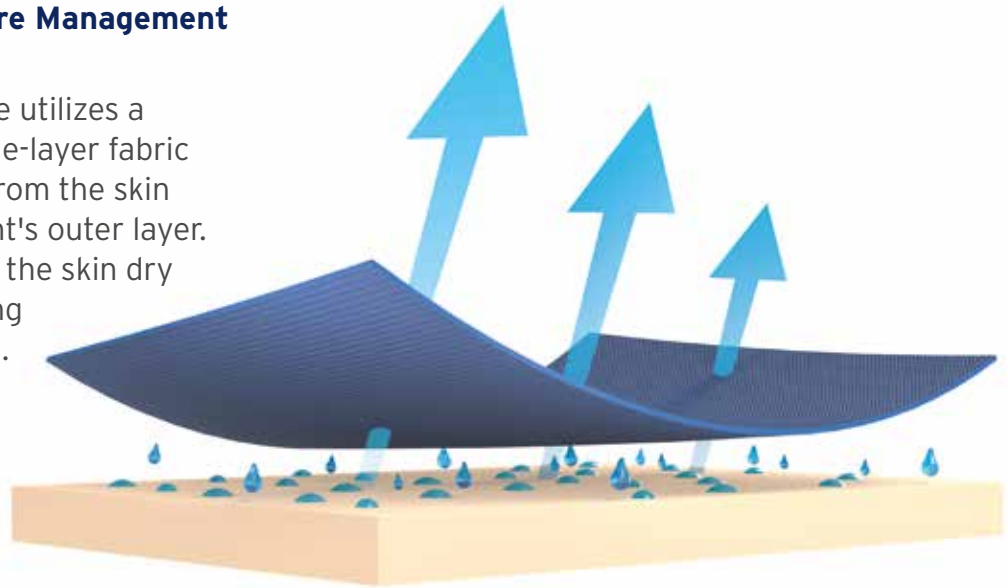
Skin-friendly fabric that meets the needs for **sensitive skin, pediatric, elderly, and lipedema** patients

Garment shown includes knee comfort, Deco line and patient initials.

Next-generation technology

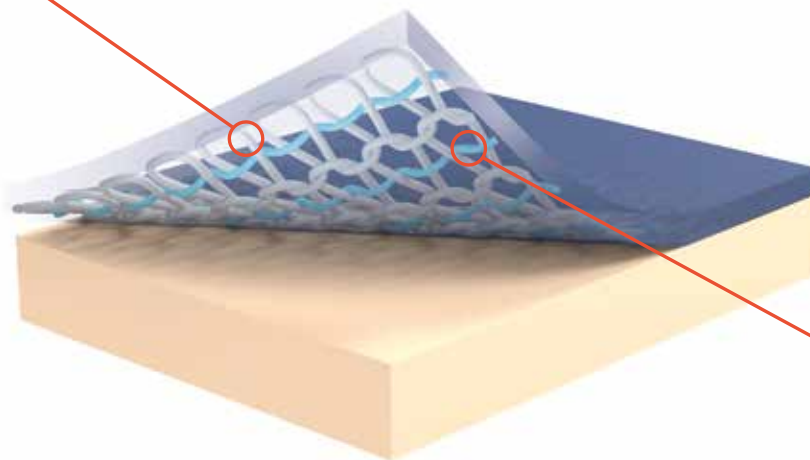
Unique built-in Moisture Management for breathability

Only JOBST® Confidence utilizes a high-performance double-layer fabric to wick away moisture from the skin and towards the garment's outer layer. This is designed to keep the skin dry and leave patients feeling comfortable all day long.



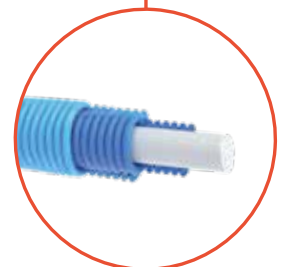
Softer yarns to support a comfortable feeling

JOBST® Confidence is created with supple yarns that have been used with a double-layered knitting construction. This provides the flexibility your patients want when wearing compression.



Firm support that adapts to each individual

The innovation in JOBST® Confidence garments means that for the first time ever, the properties of the yarn adapt to the real size of any patient. This always delivers the optimal compression level according to the RAL standard. The RAL standard is used as a basic requirement for certifying medical compression stockings and guarantees the highest quality by an independent group.



JOBST® Confidence - Innovative Technology for the freedom of flexible movement

Colours



Styles



Compression Classes

Upper Limb

CCL 1 ▶ 15 - 21 mmHg

CCL 2 ▶ 23 - 32 mmHg

Lower Limb

CCL 1 ▶ 18 - 21 mmHg

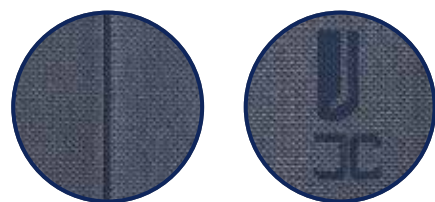
CCL 2 ▶ 23 - 32 mmHg

CCL 3 ▶ 34 - 46 mmHg



with SoftFit
technology

New Design Options



Deco Line

The deco line is positioned
on the front of the garment

Patient Initials

Initials are located under the
top band of the garment

Comfort Options



Elbow Functional Zone

Slant Toe

Ankle Functional Zone

JOBST® Elvarex® Portfolio – Offers a complete

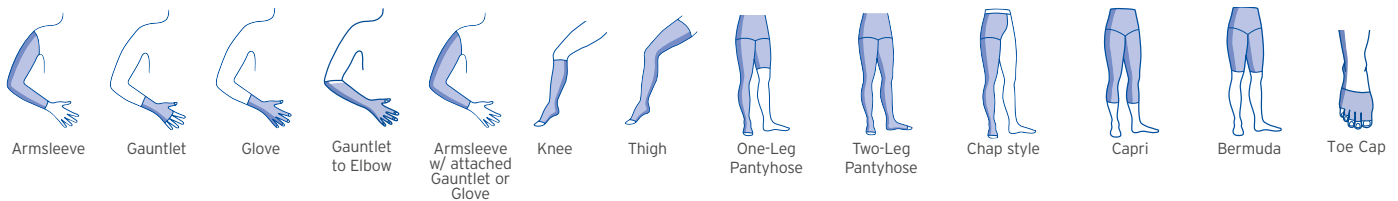
JOBST® Elvarex® – with Natural Rubber Core

JOBST® Elvarex® Key Features

- Flat-knit structure bridges skin folds instead of working into them
- Latex core provides excellent containment and allows garment to return to original shape for extended wear
- Excellent breathability for comfort and patient compliance
- Seven compression classes for optimal therapeutic outcomes
- Vast product assortment covers a diverse range of specifications and requirements of patients
- SPF 80 UV protection



Basic Styles



Compression classes



Extremities / Colours

Upper	1-2	Beige	Black	Navy	Honey	Cranberry	Caramel			
	2-Forte	Beige	Black	Navy	Honey	Cranberry				
Lower	1-4 Super	Beige	Black	Navy	Cocoa	Cranberry	Grey	Henna**	Graphite**	Denim**

* Not available in Toe Cap

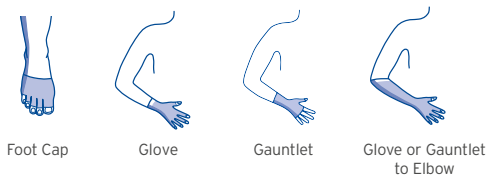
JOBST® Elvarex® Plus®

Seamless 3D Knitting Technology – Pairs with Confidence Line

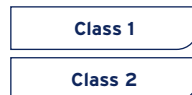
JOBST® Elvarex® Plus® Key Features

- 3D technology to closely conform to hands and feet
- The seamless helps eliminate potential irritation
- Elvarex Plus styles pairs with the Confidence line

Basic Styles



Compression classes



Type / Colours

Hand	Beige	Black	Navy	Honey	Cranberry	Caramel	Red
Foot	Beige	Black	Navy	Cocoa	Cranberry	Grey	Red

te range that's as individual as your patients

JOBST® Elvarex® Soft

Softer, Latex-Free Garment

**LATEX
FREE
FORMULA**

JOBST® Elvarex® Soft Key Features

- Specialized seam yarns for a smoothhand gentle seam against the skin
- Well suited for pediatric or elderly patients and patients with lipedema or sensitive skin
- Excellent anatomical fit
- Latex-free garment



Basic Styles



Compression classes



Extremities / Colours

Upper CCL 1-2	● Beige	● Black	● Navy	● Cranberry	● Honey
Lower CCL 1-3	● Beige	● Black	● Navy	● Cranberry	

JOBST® Elvarex® Soft Seamless

Soft and Seamless for Hands and Feet

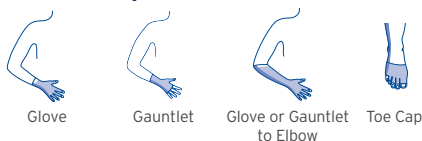
**LATEX
FREE
FORMULA**

JOBST® Elvarex® Soft Seamless Key Features

- Soft, durable, and breathable flat-knitted fabric
- Flat edge finish at fingers and toes decreases bulk and prevents curling
- Easy to don, comfortable to wear
- Latex-free garment to pair with Confidence line



Basic Styles



Compression classes



Extremities / Colours

Upper CCL 1-2	● Beige	● Black	● Navy	● Cranberry	● Honey
Lower CCL 1-3	● Beige	● Black	● Navy	● Cranberry	



JOBST® Compression Institute's mission is to answer questions and be a valuable resource for fitters, clinicians, healthcare providers and caregivers interested in learning more about compression therapy and lymphatic and venous disorders.

<http://www.jobstcompressioninstitute.com>

Canada Customer Service Hours

Monday - Friday
8:30am - 5:00pm ET

Canada Customer Service Contact Information

Tel: 1-877-978-5526 Fax: 1-877-978-9703
Email: ca.customerservice@essity.com

Available On-Line 24 hours per day, 365 Days per Year

Custom Products: eshop.jobst-ca.com



Please refer to the product label and / or package insert for full instructions on the safe use of these products.



JOBST®,
an Essity brand

Essity
1275 North Service Road West, Suite 800
Oakville, ON Canada L6M 3G4
Tel. 1-877-978-5526 Fax 1-877-978-9703