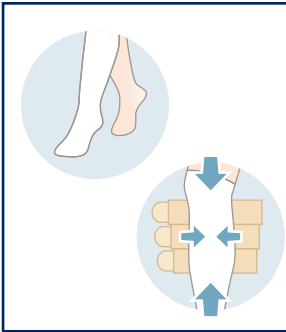


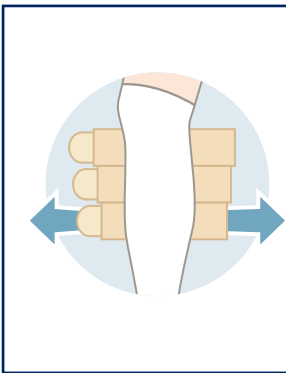
DONNING

- Before applying or after removing the garment, fold back the VELCRO® Brand product end of the band on itself for garment care and ease of handling
- Please refer to the product insert for wash and care guidelines

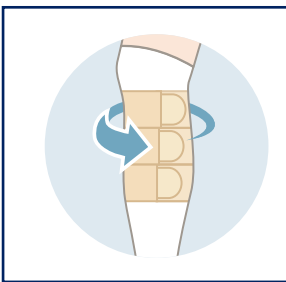


- Apply your liner or FarrowHybrid® sock.† (Fabric should be smooth)
- For ease of donning and to keep bands out of the way, gently secure the top band first
- The top band should be two fingers width below the back of the knee with the garment spine positioned following the contour of your back leg

† Open wounds should be covered before applying liner or sock



- Pull both bottom (bold bottom) bands horizontally from spine
 - GENTLY for Classic and Basic (an approximate stretch of the garment by 10%)
 - MODERATELY for Light and Strong (an approximate stretch of the garment by 15%)
- While holding at appropriate stretch, wrap the non-VELCRO® Brand product band around the leg
- Wrap the band with VELCRO® Brand product over the leg and secure



- Continue to wrap each band over the next, starting with ankle and ending with top strap
- Be sure to pull horizontally to end-stretch for each band
- Undo the top-band and reapply with end-stretch force

The FarrowWrap® 4000 will not have the same 50% overlay as the other products. This is normal.

For more information regarding donning your JOBST® FarrowWrap® products, please visit: <https://www.youtube.com/BSNMedicalTrainingUS>

* The average compression for a medium sized ankle.
 ** Colours: Tan; Sizes: S, L

WASH AND CARE GUIDE

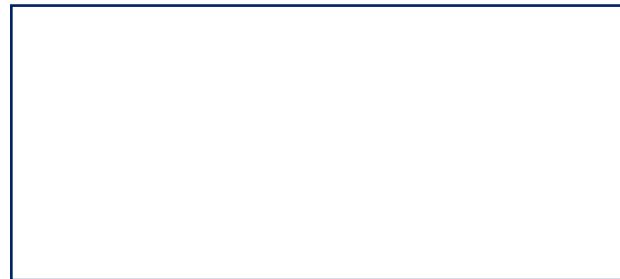
| | Classic | LITE | STRONG | BASIC | 4000 | Silver & Terry Cloth | FarrowHybrid® I & II |
|----------------------|---------|------|--------|-------|------|----------------------|----------------------|
| Hand Wash | • | | | | | | |
| Machine Wash Warm | | | | | | • | • |
| Machine Wash Cold | | • | • | • | • | | |
| Lay Flat to Dry | • | | | | | | |
| Tumble Dry, Low Heat | | | | | | • | • |
| Tumble Dry, No Heat | | • | • | • | • | | |

Do not bleach, iron, or dry clean your JOBST® FarrowWrap® products.

JOBST COMPLIANCE AID

Jolastic® Washing Solution

This warm water wash is formulated to remove soil, body oils, and skin salts quickly and thoroughly without damage to fabric. Jolastic® Washing Solution will help extend the life of JOBST® garments.



VELCRO® is a Registered Trademark of Velcro BVBA.
 Please refer to the product label and / or package insert for full instructions on the safe use of these products.



Essity
 1275 North Service Road West, Suite 800
 Oakville, Ontario L6M 3G4
www.jobstcanada.com
www.essity.com
 Tel 1-877-978-5526 Fax 1-877-978-9703



JOBST® FarrowWrap®

Edema management
 made simple with FARROWWRAP®
 elastic short-stretch™



Why JOBST® FarrowWrap®

HOW IT WORKS

How does a JOBST® FarrowWrap® achieve compression?

- Utilizing special fabrics with smart elastic short-stretch bands comprised of multi-layered fabrics
- Optimal width of bands and amount of band overlap from bottom to top

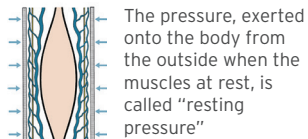
The Elastic Short-Stretch™ fabrics provide sustained resting compression while also augmenting the calf-muscle pump to deliver high working compression.

BENEFITS

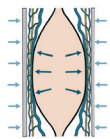
- The simple VELCRO® Brand product system supports easy donning and doffing for maximum or optimal patient independence
- Since the product is adjustable, fluctuating edema levels can be more easily managed
- The variety of styles and sizes available in Ready-to-Wear (RTW), Trim-to-Fit (TTF), Custom-Made (CM) ensures there is a FarrowWrap® to meet a broad range of patient needs

CHARACTERISTICS OF SHORT-STRETCH TECHNOLOGY

- Allows creation of products with different compression levels at end-stretch
- Provides superior augmentation of the body's natural muscle pump action
- Maximizes calf muscle function
- Helps minimize swelling throughout the day once garment is donned
- Provides higher compression when the patients stand or are active and less when they are not



The pressure, exerted onto the body from the outside when the muscles at rest, is called "resting pressure"



The pressure exerted onto the body from the inside as the muscle activates and expands, is called the "working pressure"

Short-stretch bandages deliver a low resting pressure and a high working pressure, producing a massaging effect on the calf muscle when the patient is active, which in turn produces a subsequent increase in lymphatic return. This makes short-stretch systems very effective in the management of lymphedema.

The JOBST® FarrowWrap® Product Range

LITE

Available versions

- Upper and lower limb
- Ready-to-Wear (RTW)
- Trim-To-Fit (TTF)
- Custom-Made (CM)

Compression: 20-30 mmHg*

Mild to moderate chronic edema / lymphedema



Armpiece



Armpiece



Ambidextrous Hand Gauntlet Foam Squares Ready-to-Wear only)



Footpiece



Legpiece



Thighpiece

Footpiece Legpiece Thighpiece

A double-laminated fabric suitable for mild to moderate compression needs, making it especially suitable for palliative patients. The fabric is both durable and breathable.

STRONG

Available versions

- Upper and lower limb
- Ready-to-Wear (RTW)
- Trim-To-Fit (TTF)
- Custom-Made (CM)

Compression: 30-40 mmHg*

Moderate to severe chronic edema / lymphedema with a good limb shape



Footpiece



Legpiece



Thighpiece

Footpiece Legpiece Thighpiece

Premium fabric with strong compression and soft inner layer suitable for patients with a good limb shape and moderate to severe edema.

CLASSIC

Available versions

- Upper and lower limb
- Ready-to-Wear (RTW)
- Custom-Made (CM)

Compression: 30-40 mmHg*

Moderate to severe chronic edema / lymphedema



Footpiece



Legpiece



Thighpiece

The original material that has been clinically proven over many years of use on thousands of patients worldwide. The rigid nature of the material offers performance beyond the compression range making it excellent for patients with moderate to severe edema.

BASIC

Available versions

- Lower limb
- Ready-to-Wear (RTW)

Compression: 30-40 mmHg*. Moderate to severe edema / lymphedema



Legpiece



Hybrid Sock*

A Value fabric with quality compression. Uses double-sided VELCRO® Brand product so it is possible to change band length and trim as limb reduces.

* This sock is a liner and only provides compression at the foot.

4000

Available versions

- Lower limb
- Ready-to-Wear (RTW)

Compression: 30-40 mmHg*. Moderate to severe edema / lymphedema



Legpiece



Hybrid Sock*

The inner sleeve and 4-band design make for easy application. Anatomically contoured to prevent gapping.

* This sock is a liner and only provides compression at the foot.

